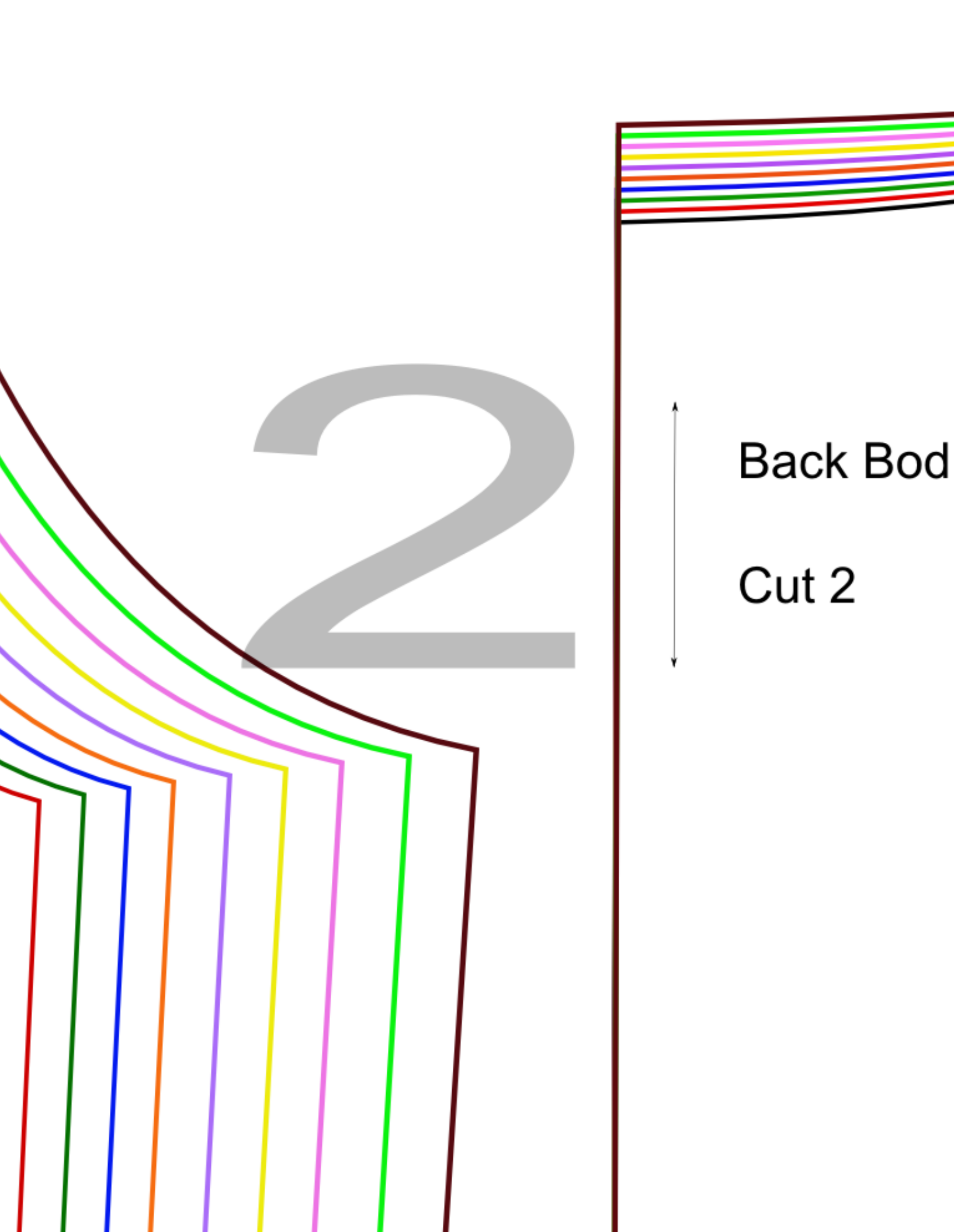
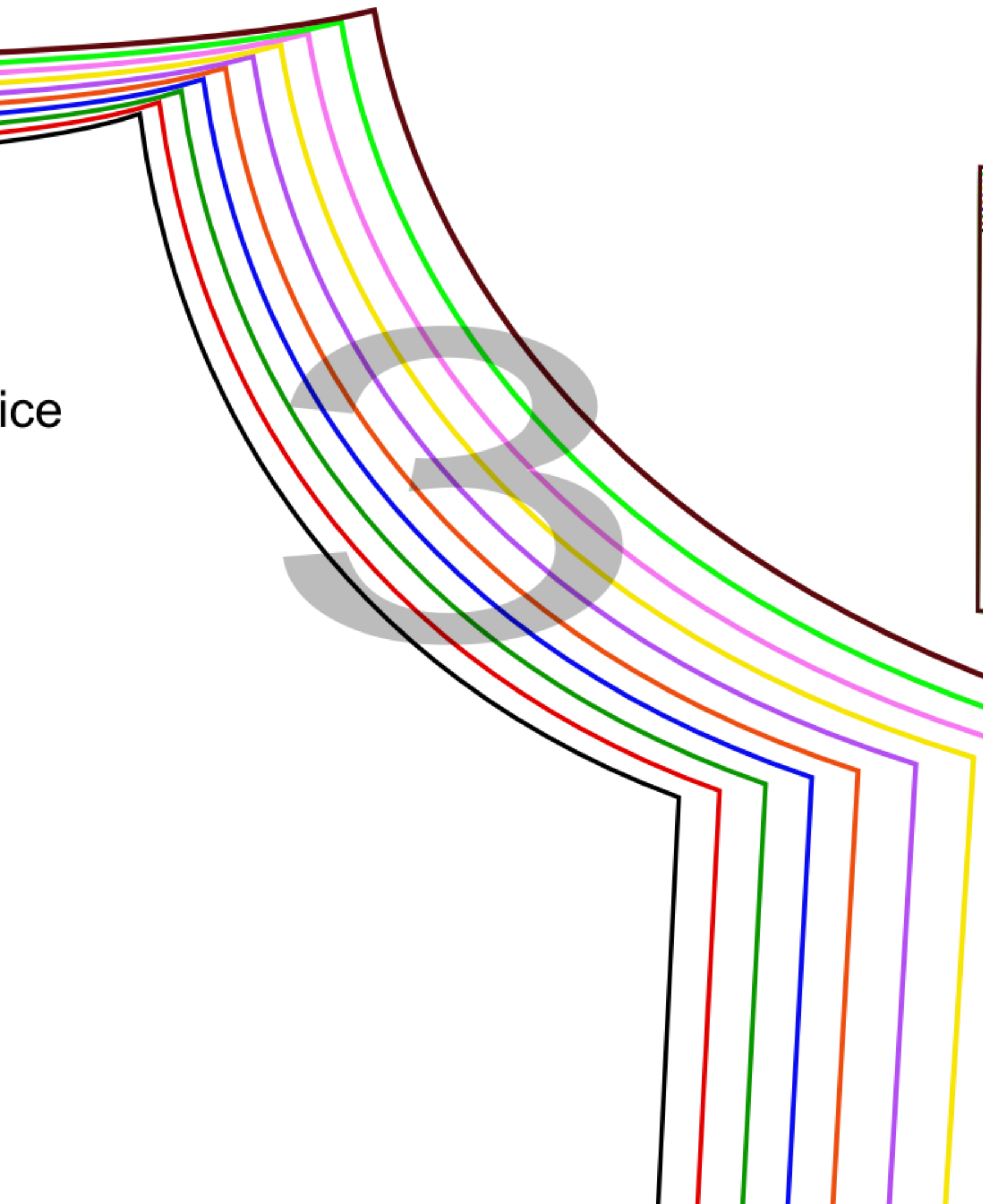


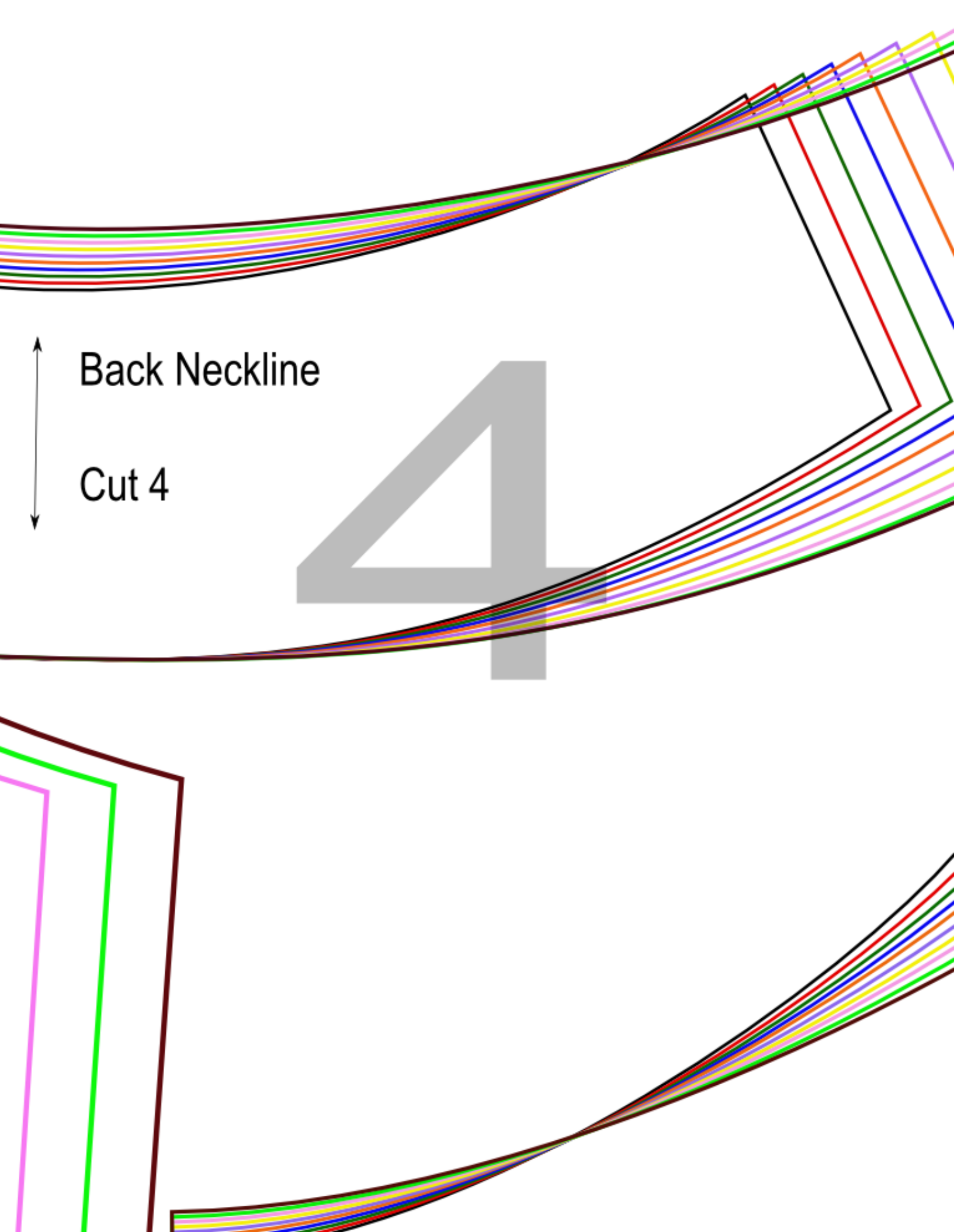
Front Bodice
On fold
Cut 1

1
Inch



ice

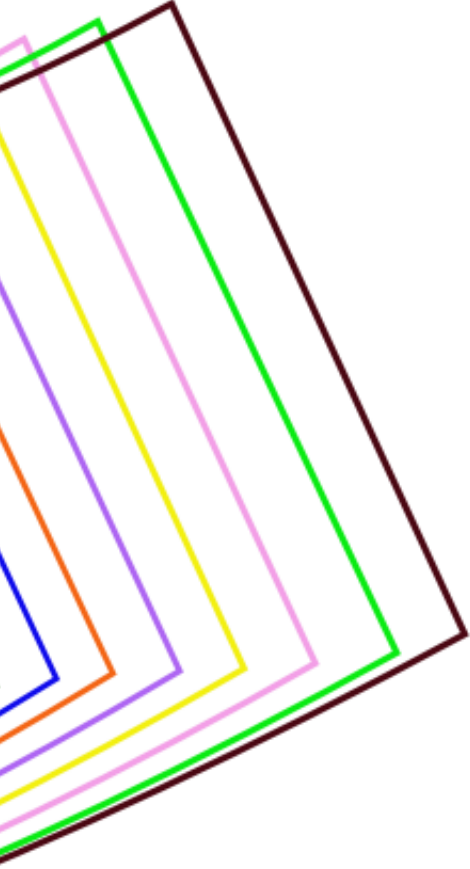




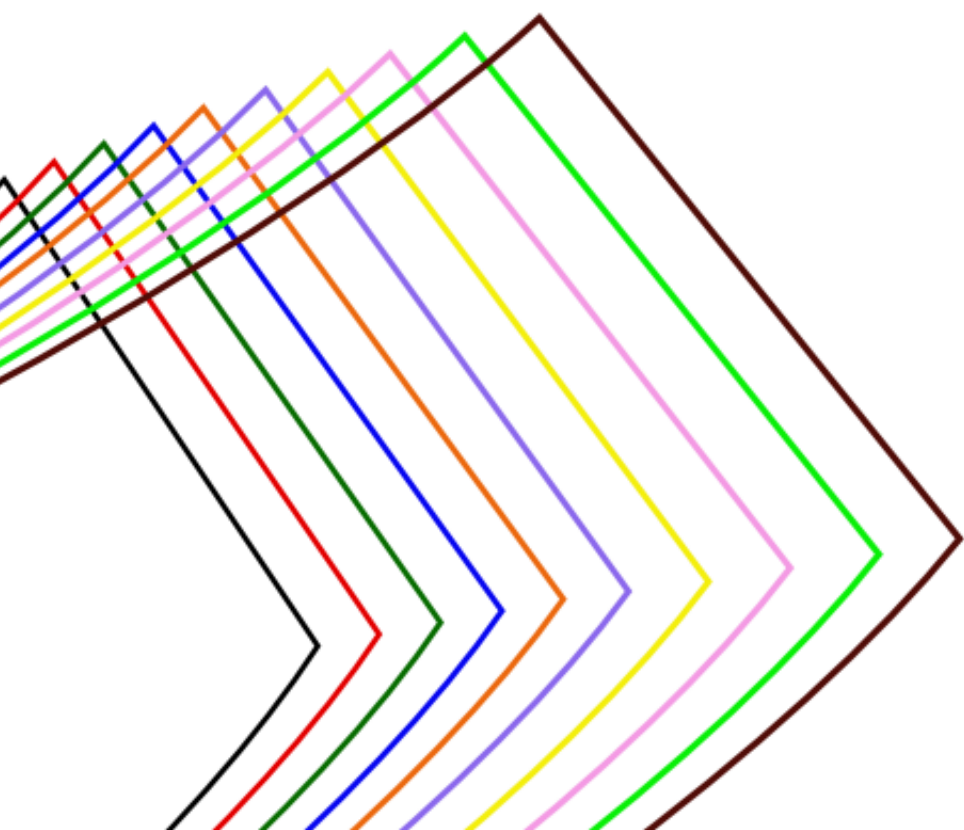
Back Neckline

Cut 4

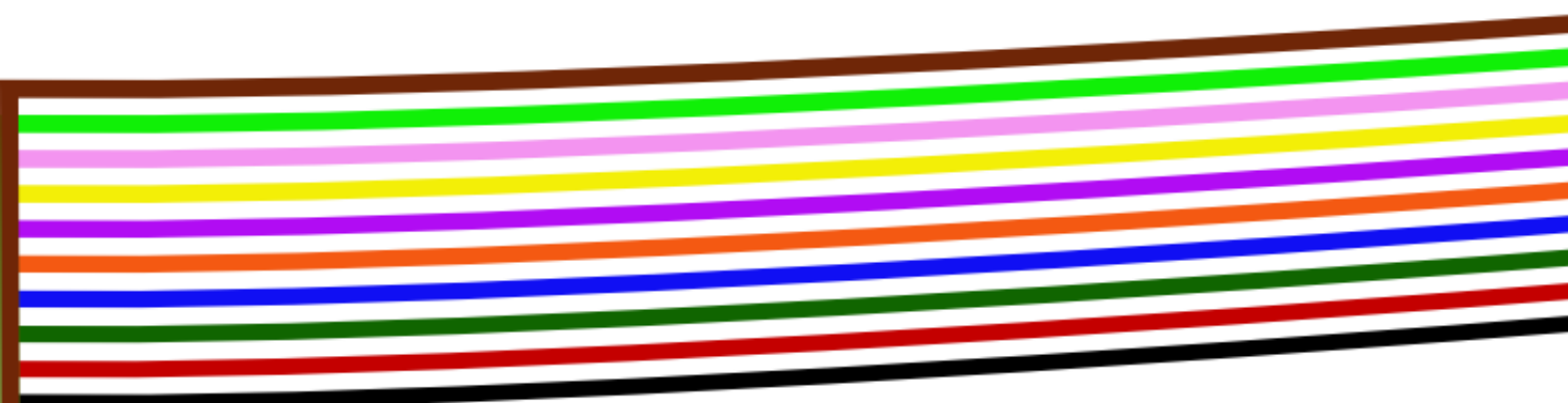
4



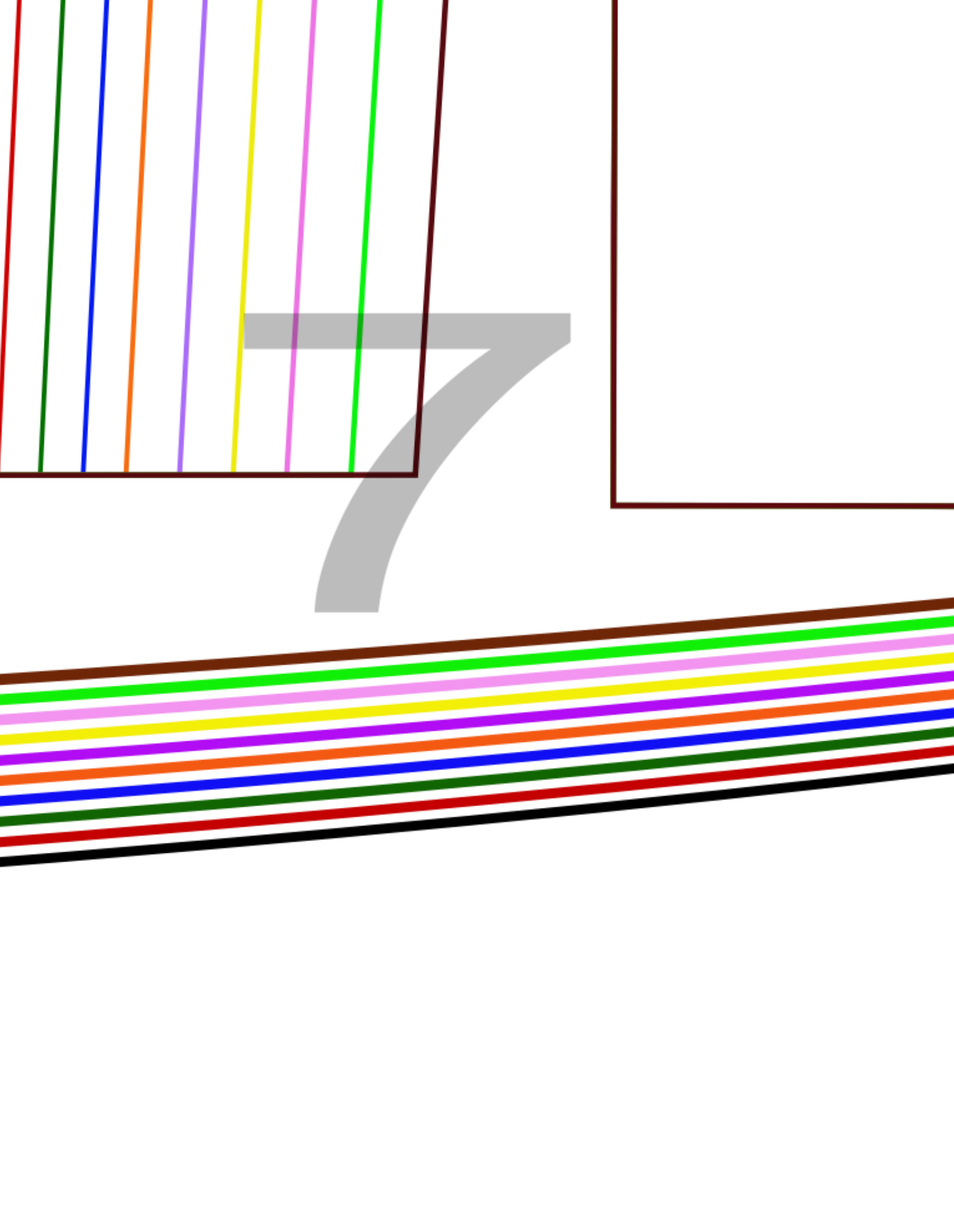
5

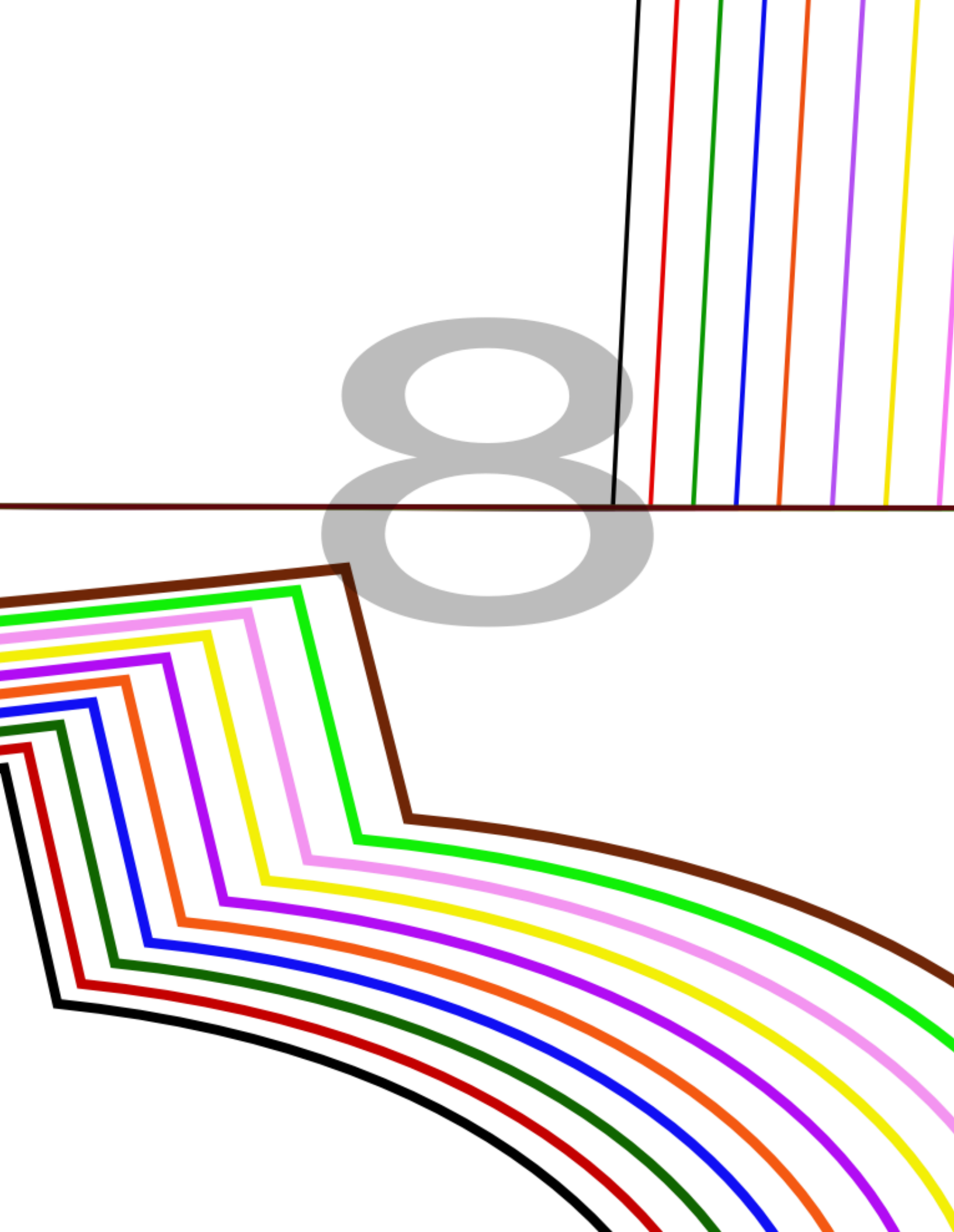


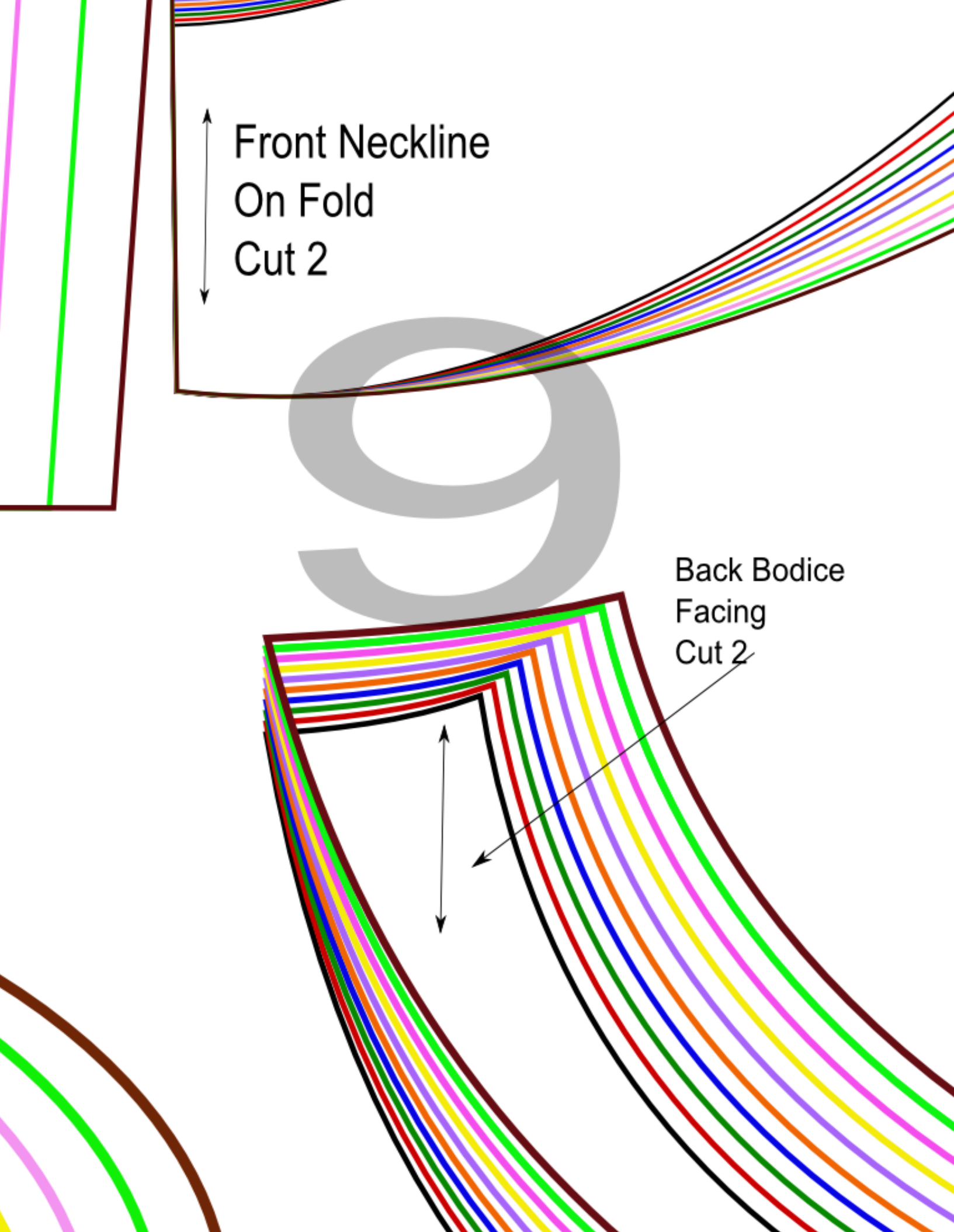
6



Skirt
On Fold





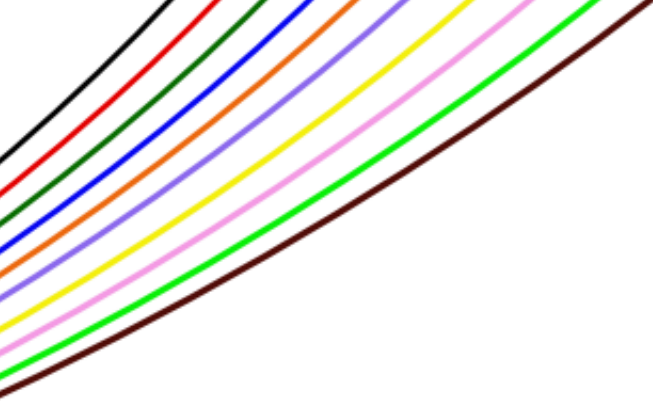


Front Neckline
On Fold
Cut 2

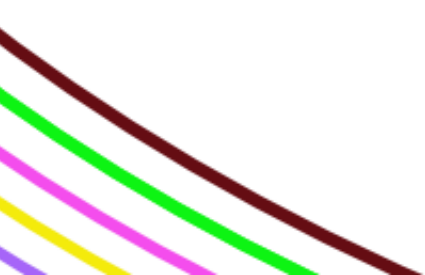
The diagram illustrates a pattern piece for a garment's front neckline. It features a series of parallel, slightly curved lines in various colors (brown, green, pink, yellow, blue, red, purple, orange, and black) representing multiple layers of fabric. A vertical double-headed arrow on the left side indicates the width of the neckline. A large, faint, grey watermark of the letter 'S' is visible in the background.

Back Bodice
Facing
Cut 2

The diagram shows a pattern piece for the back bodice facing. It consists of a series of parallel, curved lines in the same color sequence as the front neckline piece. A vertical double-headed arrow on the left side indicates the width of the facing. A diagonal arrow points from the text label to the pattern piece.



10

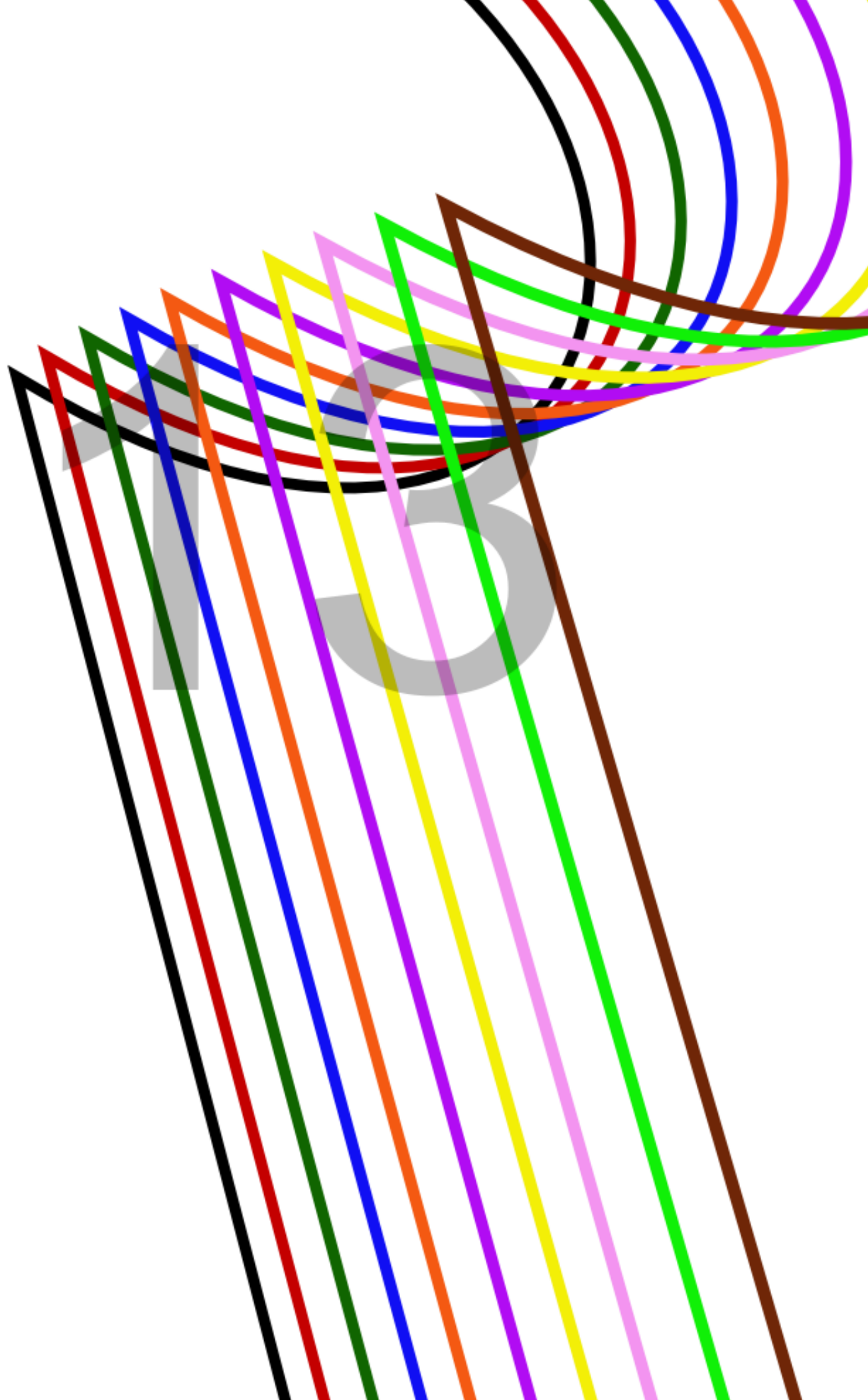


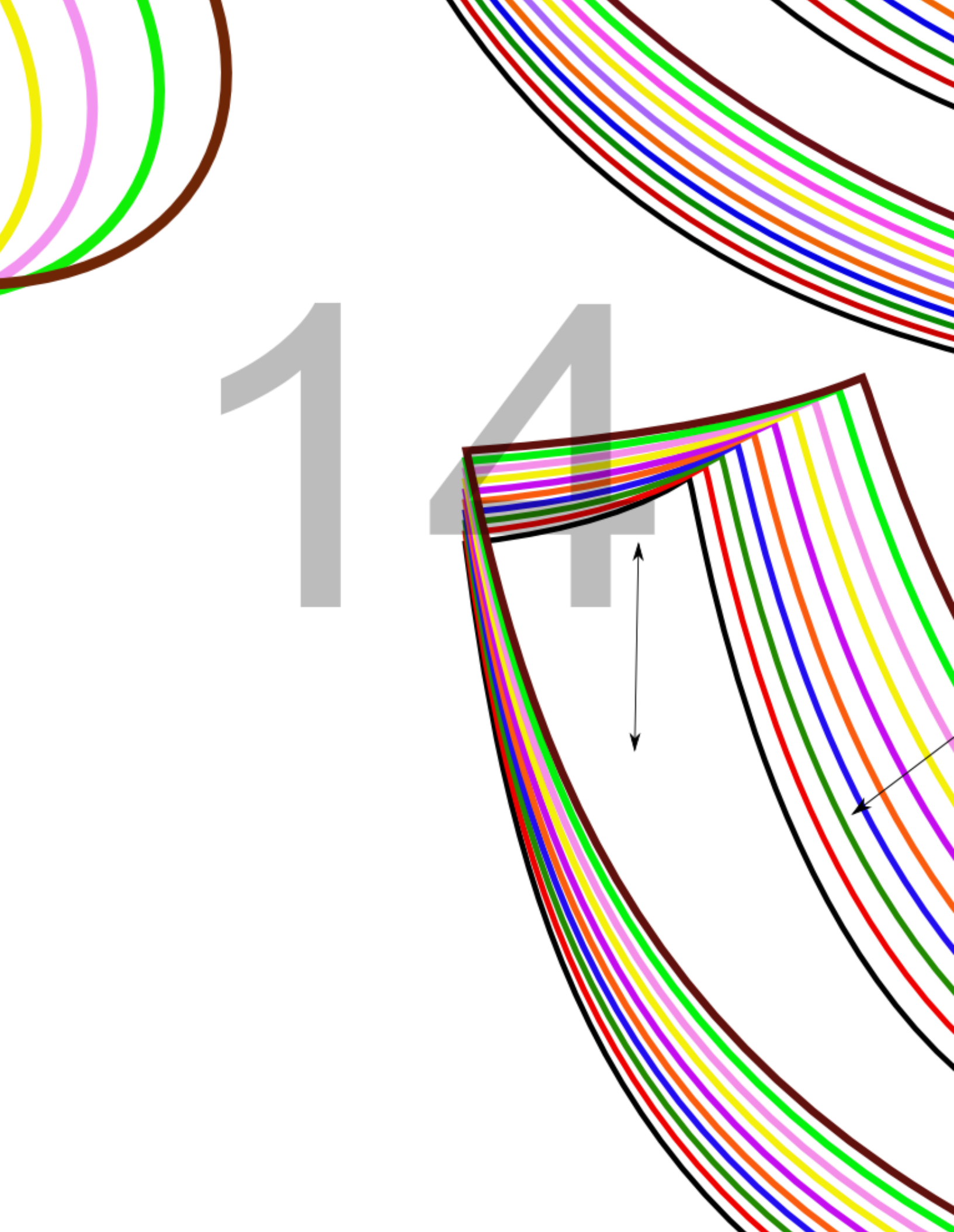
On Fold Cut 2

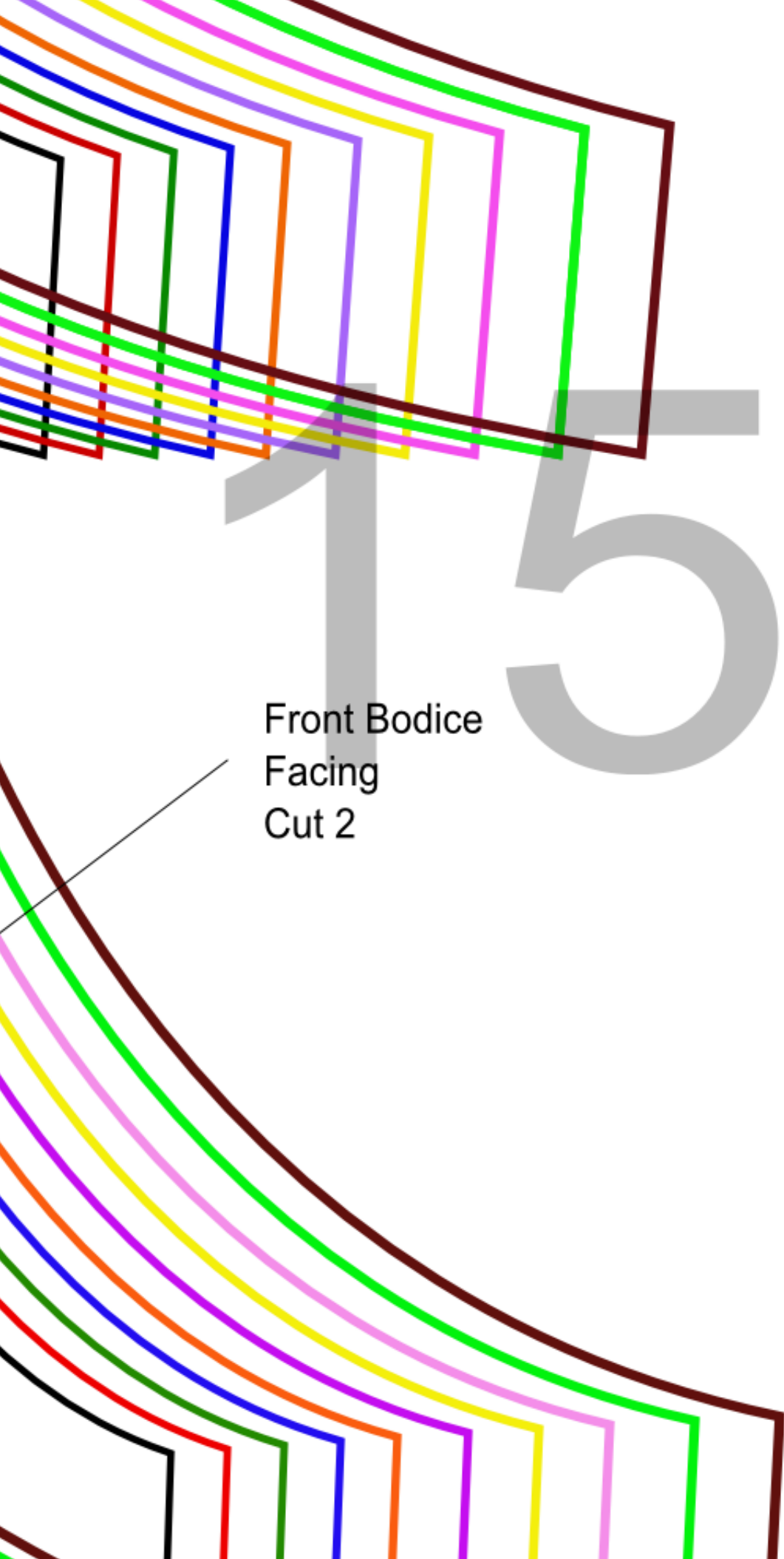


1 1

12



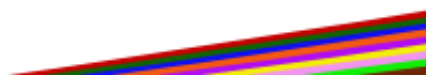




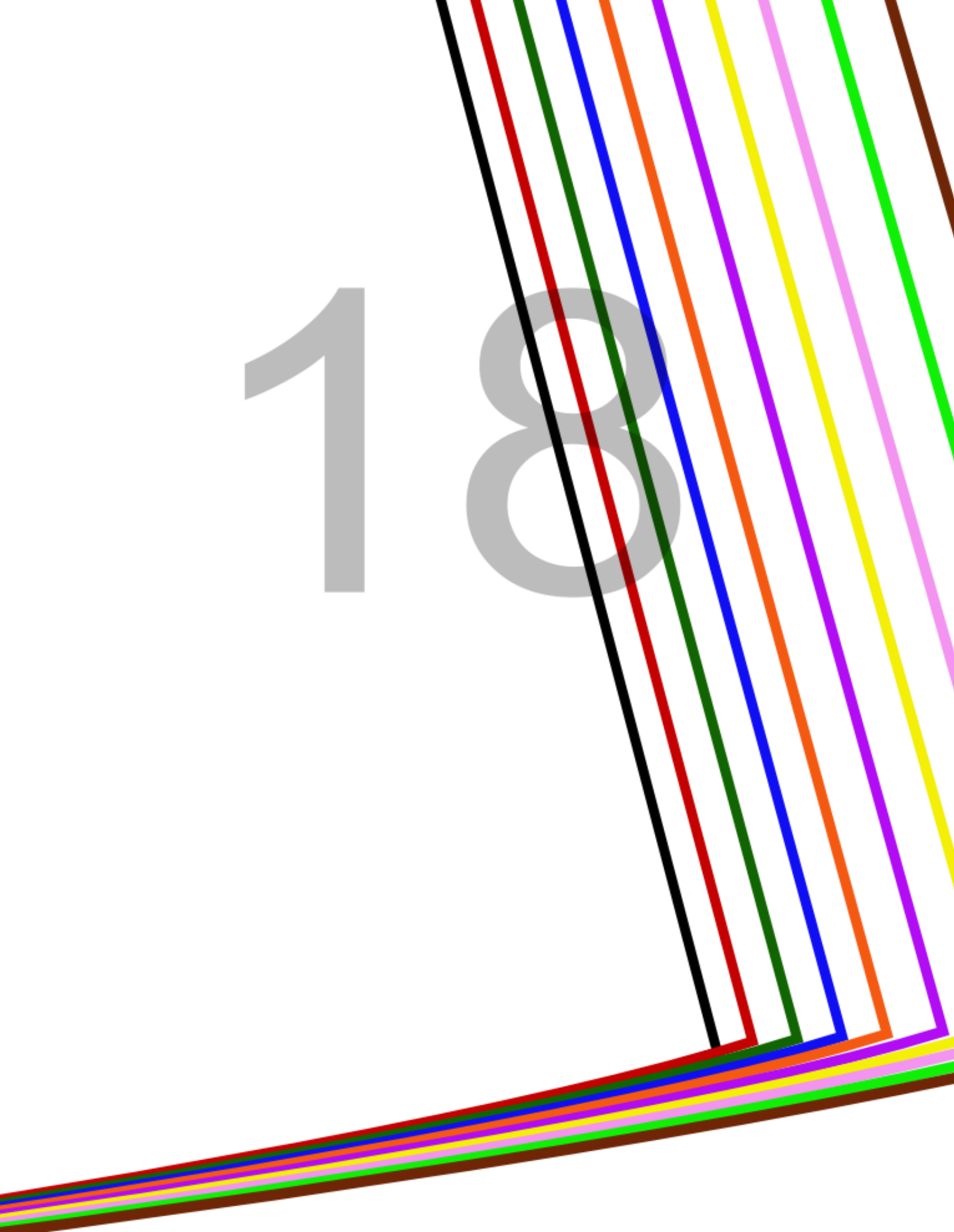
Front Bodice
Facing
Cut 2

16

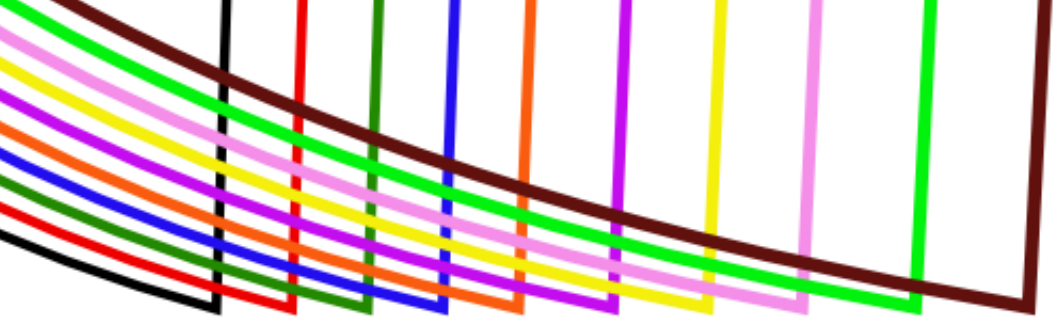
17



18



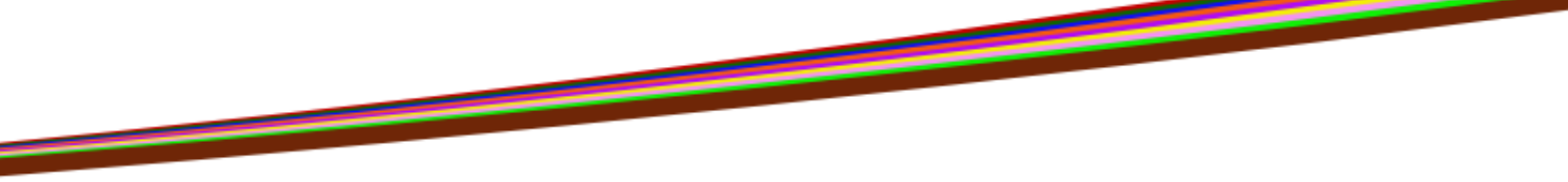
19



20



21



22

23

24

25